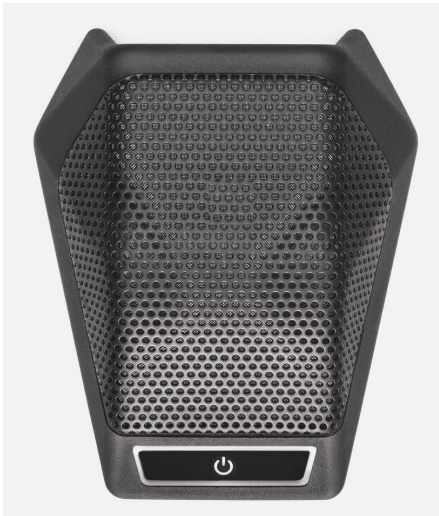




The INTELLITECH Boundary Layer Microphone - IBM-D mic is a low profile microphone that can be used with standard and automatic mic mixers. The multi-pattern versatility of the microphone makes it a true “problem solver”. The IBM-D mic features a large soft-touch mute button. The mute button can be configured for push-on/push-off, push-to talk, or push-to-mute functions.



Mute switch programming is easily accomplished without disassembling the microphone. The microphone can also be programmed to be either live or muted when power is initially applied. Additionally, a switch on the bottom of the mic, quickly converts the IBM-D to automatic mixer mode. In this mode, audio is always on.

*Picture for illustration purpose only



Specifications:

Model	IBM-D
Element	Pre-polarized condenser
Frequency Response	20-20kHz
Polar Pattern	Cardioid
Switches and Controls	Push on/off or Push-to-mute/Push-to-talk selector, Power up on/off selector
Sensitivity	32.5Mv/Pascal ~ 140 cm distance
Equivalent noise level weighted as per CCIR	39 dB (CCIR)
THD	>125Db SPL
Equivalent Noise	29 dB (A)
Output level	65 mW 32 Ohms
Max. SPL	>145 dB
Output Impedance (1kHz)	150 Ohms
Connector	RJ45 ~ CAT5E/CAT6/CAT6A/CAT7
Power Requirement	Phantom Power 24-48V 2W
Current Consumption	5.3 mA

*Picture for illustration purpose only